

# Original Instructions

## IMPORTANT

### READ CAREFULLY BEFORE USE

### KEEP FOR FUTURE REFERENCE

## European Union Compliance Statement

### Information on Disposal for Users of Waste Electrical & Electronic Equipment



This symbol on the product or on its packaging indicates that used electrical and electronic products should not be mixed with unsorted municipal waste. For proper treatment, it is your responsibility to dispose of your waste equipment by arranging to return it to designated collection points.

Disposing of this product correctly will help save valuable resources and prevent any potential negative effects on human health and the environment, which could otherwise arise from inappropriate waste handling.

To return your used device, please use the return and collection systems or contact the retailer where the

product was purchased, which is free of charge, please contact your local authority for further details of your nearest designated collection point.

Penalties may be applicable for incorrect disposal of this waste, in accordance with your national legislation.

### Restriction of the use of certain hazardous substances (RoHS) Directive

Ecovacs Home Service Robotics Co., Ltd. hereby declares the whole product including parts (cables, cords, and so on) meets the requirements of RoHS Directive 2011/65/EU and amendment Commission Delegated Directive (EU) 2015/863 on the restriction of the use of certain hazardous substances in electrical and electronic equipment ("RoHS recast" or "RoHS 2.0").

### Radio Equipment Directive

Ecovacs Home Service Robotics Co., Ltd. hereby declares that the product listed in this section comply with the essential requirements and other relevant provisions of the Radio Equipment Directive 2014/53/EU.

### Europe Authorised Representative:



ECOVACS Europe GmbH  
Holzstrasse 2 | D-40221 Düsseldorf | Germany

Ecovacs Home Service Robotics Co., Ltd. hereby declares that the product comply with the essential requirements and other relevant provisions of the RoHS

Directive 2011/65/EU and amendment Commission Delegated Directive (EU) 2015/863, the Radio Equipment Directive 2014/53/EU and the Machinery Directive 2006/42/EC

The declaration of conformity can be viewed at the following address: <https://www.ecovacs.com/global/compliance>.



This symbol on the product or on its packaging indicates that used electrical and electronic products should not be mixed with unsorted municipal waste. For proper treatment, it is your responsibility to dispose of your waste equipment by arranging to return it to designated collection points.

Disposing of this product correctly will help save valuable resources and prevent any potential negative effects on human health and the environment, which could otherwise arise from inappropriate waste handling.

To return your used device, please use the return and collection systems or contact the retailer where the product was purchased, which is free of charge, please contact your local authority for further details of your nearest designated collection point.

Penalties may be applicable for incorrect disposal of this waste, in accordance with your national legislation.

### **The Restriction of the Use of Certain Hazardous Substances in Electrical and Electronic Equipment Regulations 2012**

Ecovacs Home Service Robotics Co., Ltd. hereby declares the whole product including parts (cables, cords, and soon) meets the requirements of The Restriction of the Use of Certain Hazardous Substances in Electrical and Electronic Equipment Regulations 2012.

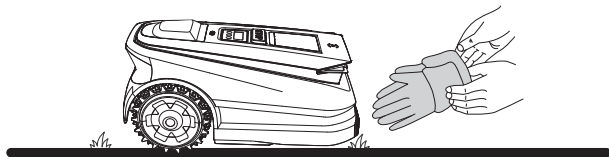
### **Radio Equipment Regulations 2017**

Ecovacs Home Service Robotics Co., Ltd. hereby declares that the product listed in this section comply with the essential

requirements and other relevant provisions of Radio Equipment Regulations 2017.

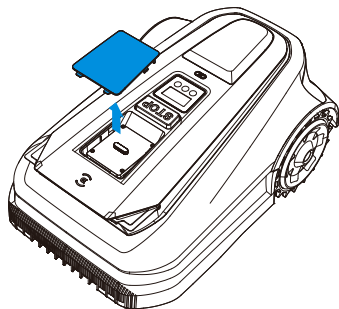
## TIPS BEFORE OPERATION:

- PLEASE WEAR GLOVES BEFORE INSTALLATION TO PREVENT THE BLADE FROM SCRATCHING YOUR HANDS.
- POWER OFF GOAT.

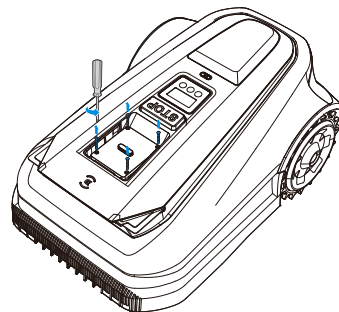


## INSTALLATION

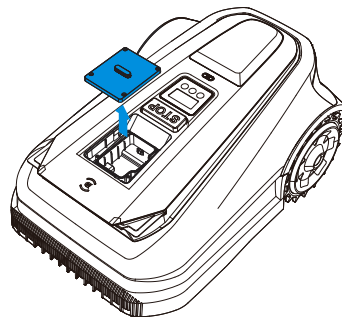
1. Remove the top cover.



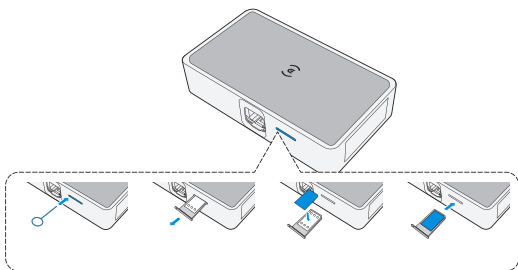
2. Use the supplied screwdriver to loosen the screws.



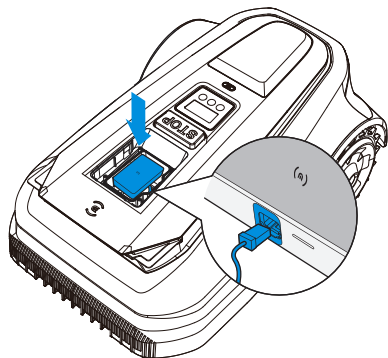
3. Remove the inner cover.



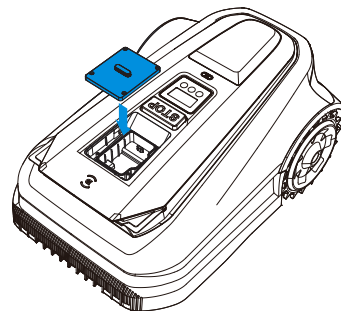
4. Insert the SIM card into the card tray with the metal side facing up, as shown in the image. Then, insert the card tray into the slot.



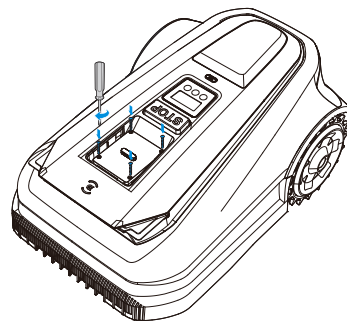
5. Connect the module connector to the cellular module, ensuring the connector is positioned with the "e" icon facing up. Arrange any excess cable neatly.



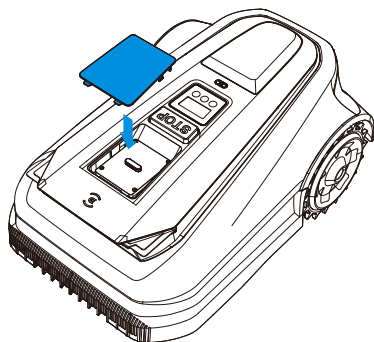
6. Close the inner cover.



7. Tighten the screws on the inner cover.



8. Close the top cover.



Model	FM2213C
Brand	ECOVACS
rated voltage	12V
Frequency bands	LTE-FDD: B1/B3/B7/B8/B20/B28A LTE-TDD: B38/B40/B41 WCDMA: B1/B8
MAX. radio-frequency power	LTE: 23dBm±2dB WCDMA:23dBm±2dB
GNSS	Only receive but not transmit
GNSS Specification	GPS: 1575.42±1.023MHz, Galileo: 1575.42±2.046MHz BDS: 1561.098±2.046MHz, GLONASS: 1597.5 ~ 1605.8MHz