



平面印刷品基本技术要求			
科沃斯机器人股份有限公司			
物料名称	说明书	尺 寸	145*210mm
型 号	ZJ2250	印刷颜色	K100 单色印刷
物料编码	451-2250-0406	装订方式	骑马钉
版 次	A00	页 数	20p
材 质	封面 157g 哑粉纸正文 80g 双胶纸	比 例	1:1
变更记录：			
		设计 	审核
			批准



WINBOT **W2** OMNI

Instruction Manual

Important Safety Instructions

When using an electrical appliance, basic precautions should always be followed, including the following:

READ ALL INSTRUCTIONS BEFORE USING THIS APPLIANCE. SAVE THESE INSTRUCTIONS

1. This appliance can be used by persons with reduced physical, sensory or mental capabilities or lack of experience and knowledge if they have been given supervision or instruction concerning use of the appliance in a safe way and understand the hazards involved. Children shall not play with the appliance. The appliance is not to be used if it has been dropped, if there are visible signs of damage or if it is leaking. Keep the appliance out of reach of children when it is energized.
2. Do not use and charge the Appliance in extremely hot or cold environments (below 0°C/32°F or above 40°C/104°F, above 85% humidity), or it may affect battery life span.
3. The Appliance can be used to clean exterior windows if it is properly tethered to a safe position with the Carabiner, winds are calm,

and it is not raining or snowing.

4. Before use, please use the Carabiner to lock the safety tether to a strong indoor railing, and make sure WINBOT is securely attached to it.
5. Do not leave the Appliance unattended when using it. To prevent bodily injury or property damage caused by accidental falling of the Appliance, please make sure there are no people, animals, or valuable, fragile objects under the working area of WINBOT.
6. Do not use the Appliance in whole gale storms and force-10 winds, or in areas where the altitude exceeds 2000 meters (6562 feet).
7. Do not leave the Appliance unattended when it is plugged in.
8. For household use ONLY (including exterior window). Do not use the Appliance in commercial or industrial environments.
9. Do not use on broken or uneven glass, such as glass with static cling stickers, advertising posters, or raised patterns, so as to prevent glass breaking or Appliance's falling. Do not use on surfaces with gaps, such as a piece of glass with gaps or holes, or two pieces of adjacent, frameless glass with a gap between them, so as to prevent the Appliance from falling due to poor attachment.

10. Only use accessories recommended or supplied by the manufacturer. Only use the Power Adapter supplied by the manufacturer.
11. Please make sure your power supply voltage matches the power voltage marked on the Power Adapter.
12. Do not use the Appliance on a framed glass with a frame smaller than 5 mm (0.2 in).
13. Do not use on glass less than 3 mm (0.12 in) thick or mirrors less than 4 mm (0.16 in) thick.
14. Do not use on glass or mirrors with a handle height of 70~105 mm (2.76~ 4.13 in).
15. Do not use the Appliance on greasy windows.
16. When used in high humidity environment, the cleaning performance will be affected.
17. Store the Appliance away from heat and flammable materials.
18. In rainy weather, do not use the Appliance on the exterior window to avoid the risk of Appliance's damage or falling.
19. Do not use the Appliance if it does not firmly attach to the glass or has visible signs of damage.
20. To reduce the risk of electrical shock, do not put the Appliance in water or other liquid. Do not place or store Appliance where it can fall or be pulled into a tub or sink.
21. Do not touch power plug with wet hands.
22. When charging the Appliance, do not place it on other electrical appliances and keep it away from fire and liquid.
23. Take care not to damage the power cord. Do not pull on or carry the Appliance by the power cord, use the power cord as a handle, close a window on the power cord, or put heavy weights on the power cord. Keep power cord away from hot surfaces.
24. Do not use with a damaged power cord or receptacle. Do not use the Appliance if it is not working properly, has been dropped, damaged, or come in contact with water. It must be repaired by the manufacturer or its service agent in order to avoid a hazard.
25. If the supply cord is damaged, it must be replaced by the manufacturer or its service agent in order to avoid a hazard.
26. The plug must be removed from the receptacle before cleaning or maintaining the Appliance. Do not unplug the Power Adapter by pulling on the power cord.
27. The Safety Battery must be replaced by the manufacturer or its service agent in order to avoid a hazard.
28. The Safety Battery must be removed and discarded according to local laws and

regulations before disposal of the Appliance.



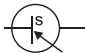



29. The Appliance must be disconnected from the receptacle before removing the battery for disposal of the Appliance.
30. Please dispose of used batteries according to local laws and regulations.
31. Do not incinerate the Appliance even if it is severely damaged. The battery can explode in a fire.
32. The Appliance must be used in accordance with the directions in this Instruction Manual. The company cannot be held liable or responsible for any damages or injuries caused by improper use.
- 33. WARNING:** For the purposes of recharging the battery, only use the detachable supply unit GM65-240275-3D provided with this Appliance.
34. The robot contains batteries that are only replaceable by skilled persons.
35. The plug and the Power Adapter must be used indoor.
36. If the vacuum glass, which WINBOT is working on, is leaking, remove WINBOT immediately after cleaning is completed.
37. Before cleaning, please observe the area to attach WINBOT for any small particles. If there

are any, please remove them or switch to a particle-free area to avoid scratching the glass.

38. Clean the Mopping Pad in time and make sure that any small particles on it are completely removed to avoid scratching the glass.

To satisfy RF exposure requirements, a separation distance of 20 cm or more should be maintained between this device and persons during device operation.

To ensure compliance, operations at closer than this distance is not recommended. The antenna used for this transmitter must not be co-located in conjunction with any other antenna or transmitter.

	Class II
	Short-circuit-proof safety isolating transformer
	Switch mode power supply
	For indoor use only
	Direct current
	Alternating current

For EU Countries

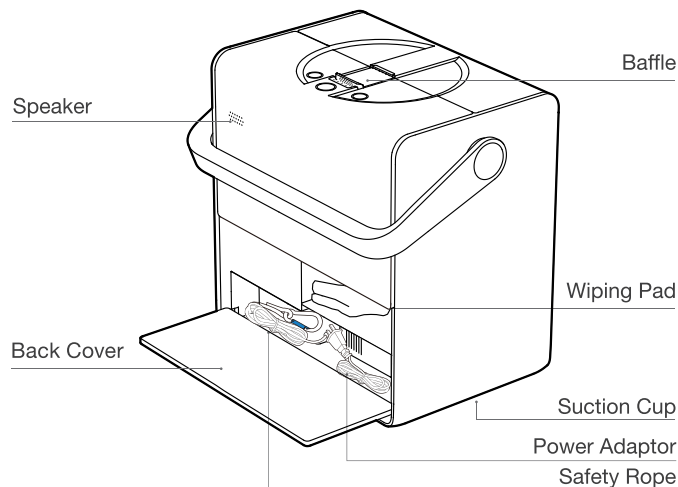
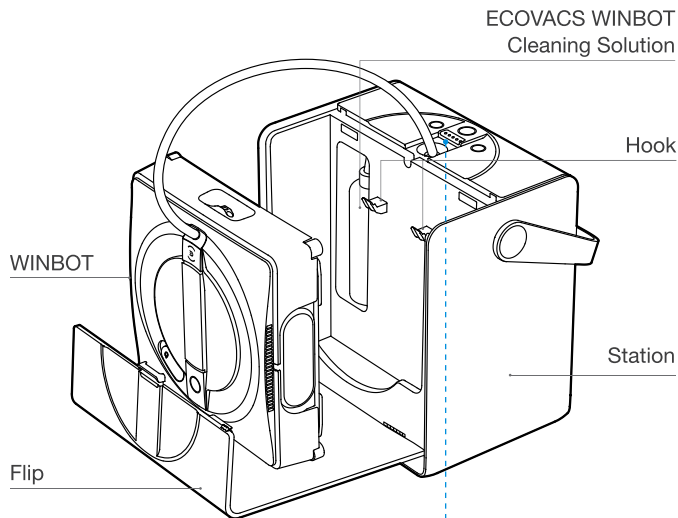
For EU Declaration of Conformity information, visit
<https://www.ecovacs.com/global/compliance>



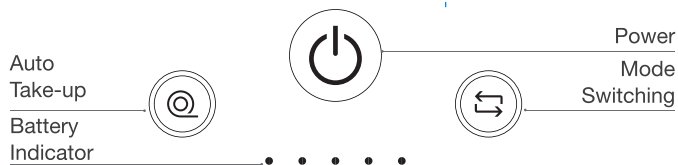
Correct Disposal of this Product

This marking indicates that this product should not be disposed of with other household waste throughout the EU. To prevent possible harm to the environment or human health from uncontrolled waste disposal, recycle it responsibly to promote the sustainable reuse of material resources. To recycle your used device, please use the return and collection systems or contact the retailer where the product was purchased. They can safely recycle this product.

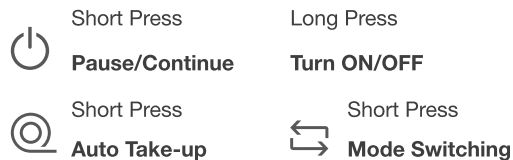
Product Diagram



Buttons



Buttons

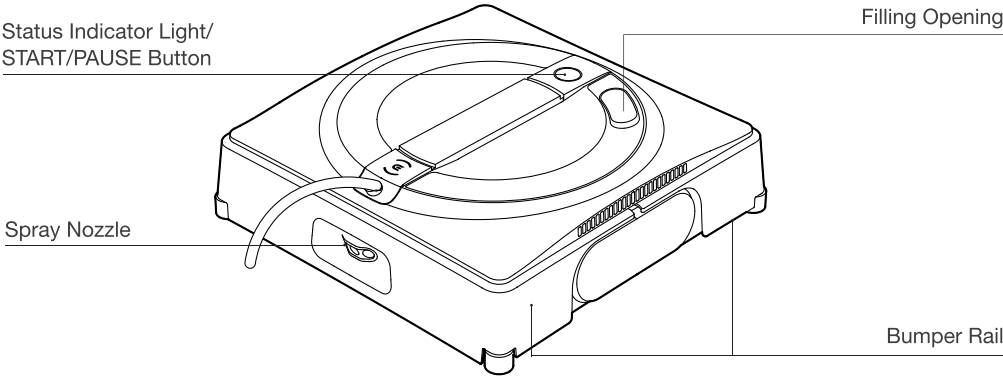


Note: Figures and illustrations are for reference only and may differ from actual product appearance.
Product design and specifications are subject to changes without notice.

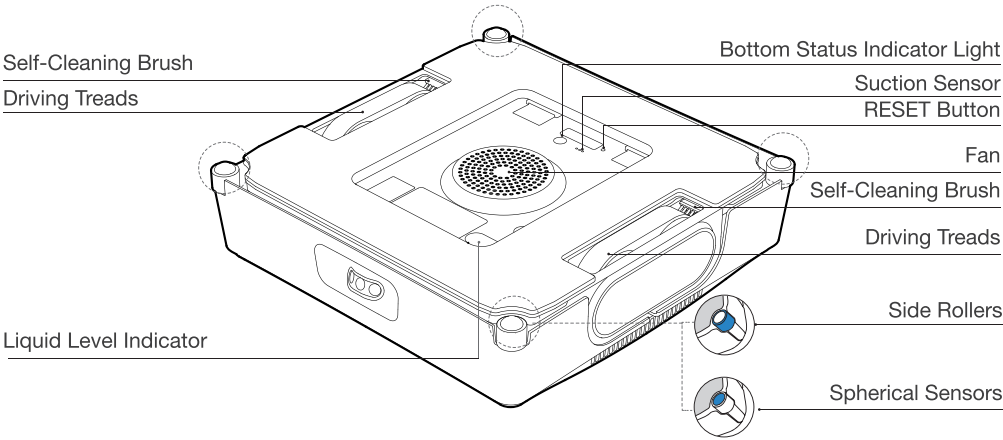
When WINBOT is working, long press to make it return to Initial Spot; press and hold ≥ 2 seconds and short press at the same time to release the Suction Cup

Product Diagram

WINBOT

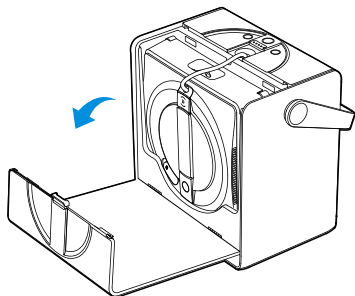


Bottom View

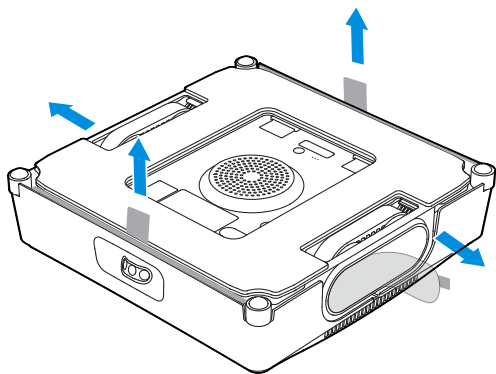


Quick Start

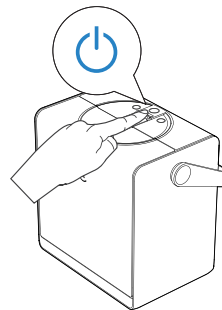
1. Open the Flip as shown in the picture.



2. Take WINBOT out and remove all protective materials.

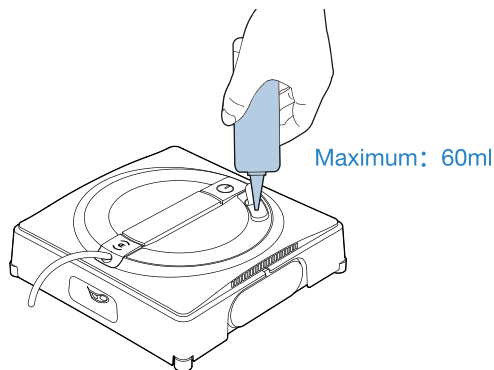


3. Long press Power button for 2 seconds to turn on Station and WINBOT.



*The initial charge can sustain WINBOT for approximately 40 minutes of operation in the default mode.

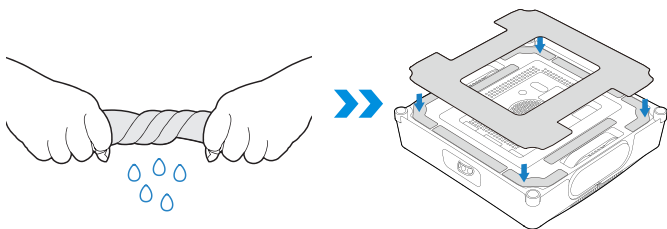
4. Add ECOVACS WINBOT cleaning solution to the Water Tank.



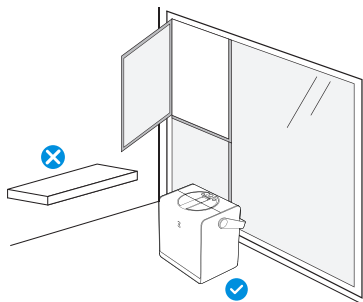
*Do not add too much cleaning solution to overflow the Water Tank.

*Do not use cleaning solution from other manufacturers.

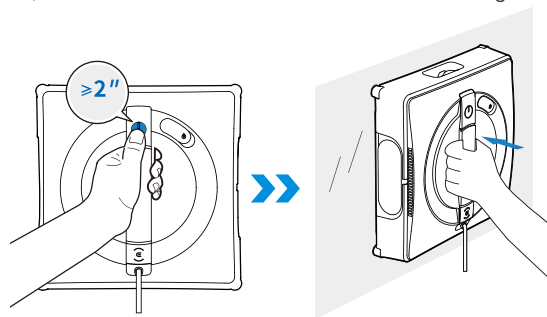
5. Wet and wring out the Wiping Pad and place it flat on the velcro at the bottom of WINBOT. Pay attention to align the narrow and wide side accordingly.



6. Make sure to place Station on a flat, seamless surface.

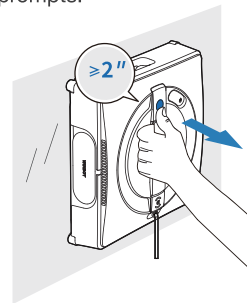


7. Long press START button for 2 seconds to start the fan. Place the bottom side of WINBOT (the side with Wiping Pad) against the window; WINBOT will auto-attach itself and start cleaning.



*Before cleaning, please observe the area to attach WINBOT for any small particles. If there are any, please remove them or switch to a particle-free area to avoid scratching the glass.
*Clean the Wiping Pad in time and make sure that any small particles on it are completely removed to avoid scratching the glass.

8. When cleaning is completed, WINBOT automatically returns to the Initial Spot and waits to be removed. At this point, long press START button for 2 seconds to stop the fan. Then, take WINBOT off according to voice prompts.



*If the vacuum glass, which WINBOT is working on, is leaking, remove WINBOT immediately after cleaning is completed.

Technical Specifications

Model	WG821-11		
Rated Input	24V=== 4A	Rated Power	126W
Power Adaptor	GM65-240275-2D or GM65-240275-3D		
Input	100-240V~ 50-60Hz 2A	Output	24V === 2.75A
Station Dimensions (mm)		312*215*327	
WINBOT Dimensions (mm)		271*271*77	

Output power of the wireless module is less than 100 mW.

Note: Technical and design specifications may be changed for continues product improvement.



Scan the QR code for more information.

重要安全指引







使用電器時務必遵守基本預防措施，包括下列事項：

使用本電器前，請先閱讀所有指引。 請妥善保管本指引

1. 本電器可供身體官能或心智能力退化者，或缺乏操作經驗和知識的人士使用；前提是需要有人從旁監督，或就如何安全使用本電器及了解潛在危險提供適當指引。請勿讓兒童玩弄本電器。若電器曾經掉落、出現明顯損壞或漏水，則請勿使用。啟動時，請勿讓兒童接觸電器。
2. 請勿於極度炎熱或寒冷的環境下使用電器和充電（溫度低於 0°C/32°F 或高於 40°C/104°F、濕度高於 85%），否則可能會影響電池壽命。
3. 在無風雨且沒有降雪的日子，使用安全鎖扣將電器正確固定於安全位置，電器就可以用於清潔外窗。
4. 使用前，請以安全鎖扣將安全繩繫於堅固的室內扶手，並確保 WINBOT 已安裝穩固。
5. 使用時，必須有人看管電器。為防止電器意外掉落而造成人身傷害或財物受損，當 WINBOT 運作時，請確保其下方區域沒有任何人、動物或貴重及易碎物品。
6. 請勿在狂風、10 級強風或海拔超過 2000 米（6562 英尺）的環境中使用本電器。
7. 接通電源時，必須有人看管電器。
8. 僅限家居使用（包括外窗）。請勿在商業或工業環境中使用本電器。
9. 請勿在破損或不平整的玻璃表面上使用（例如貼有靜電貼紙、廣告海報或凸起圖案的玻璃），以免導致玻璃破裂或電器掉落。請勿在有空隙的表面上使用（例如有空隙或穿孔的玻璃，或兩塊相鄰而中間有空隙的無框玻璃），以免因吸附不牢而導致電器掉落。
10. 只可使用製造商建議或提供的配件。只可使用製造商提供的電源適配器。
11. 請確保家居電源電壓與電源適配器上標示的電源電壓相符。
12. 請勿在框架小於 5 毫米（0.2 英吋）的有框玻璃上使用本電器。
13. 請勿在厚度小於 3 毫米（0.12 英吋）的玻璃或厚度小於 4 毫米（0.16 英吋）的鏡子上使用。
14. 請勿在手柄高度為 70~105 毫米（2.76~ 4.13 吋）的玻璃或鏡子上使用。
15. 請勿在沾有油脂的玻璃上使用本電器。
16. 在高濕度的環境下使用時，本電器的清潔性能會受到影響。
17. 請將電器存放於遠離熱源及易燃物料的地方。
18. 雨天時，請勿在外窗使用本電器，以免導致電器損壞或掉落。

19. 如本電器未能穩固吸附在玻璃上，或本電器有明顯的損壞跡象，則請勿使用。
20. 為減低觸電風險，請勿將電器放入水中或其他液體中。請勿將電器放置或存放在可能會掉落或被拉入浴缸或水槽的地方。
21. 請勿用濕手觸摸電源插頭。
22. 為電器充電時，請勿將其放置在其他電器上，並遠離火源和液體。
23. 小心避免電源線損壞。請勿以電源線拉動或搬運電器、將電源線用作把手、關窗時卡住電源線，或用重物壓住電源線。電源線應遠離高溫表面。
24. 請勿使用損壞的電源線或插座。如果電器無法正常運作、曾經掉落、損壞或接觸過水，則請勿使用。維修工序必須由製造商或其服務代理商執行，以免發生危險。
25. 如果電源線損壞，必須由製造商或其服務代理商更換，以免發生危險。
26. 清潔或維護電器前，務必將插頭從插座上拔除。請勿拉動電源線來拔除電源適配器。
27. 安全電池必須由製造商或其服務代理商更換，以免發生危險。
28. 棄置本電器前，務必根據本地法律與法規取出並丟棄安全電池。
29. 棄置本電器前，必須先從插座上拔除插頭，然後取出電池。
30. 請根據本地法律與法規棄置舊電池。
31. 即使電器嚴重損毀，亦請勿焚燒電器。電池起火後可能會爆炸。
32. 請務必依照本說明書的指引使用電器。本公司對因使用不當而造成的任何損壞或傷害概不承擔任何責任。
- 33. 警告：**只能使用電器隨附的可拆式電源供應器 GM65-240275-3D 為電池充電。
34. 主機內的電池僅可由專業人員更換。
35. 插頭及電源適配器必須在室內使用。
36. 如果 WINBOT 正在處理的真空玻璃出現漏水，請於清潔完成後立即移走 WINBOT。
37. 進行清潔前，請仔細查看 WINBOT 吸附的範圍是否有任何微小顆粒。如果有，請清除顆粒或轉移至無顆粒的位置，以免刮花玻璃。
38. 請及時清潔擦窗抹布，並確保完全清除上面的微小顆粒，以免刮花玻璃。

為滿足射頻暴露要求，在操作裝置期間，操作人員應與裝置保持 20 厘米或以上的間隔距離。為確保符合法規，不建議在更近距離下操作裝置。本發射器使用的天線不得與任何其他天線或發射器一起放置。

	二類電器
	防短路安全隔離變壓器
	開關模式電源
	僅限室內使用
	直流電
	交流電

歐盟國家

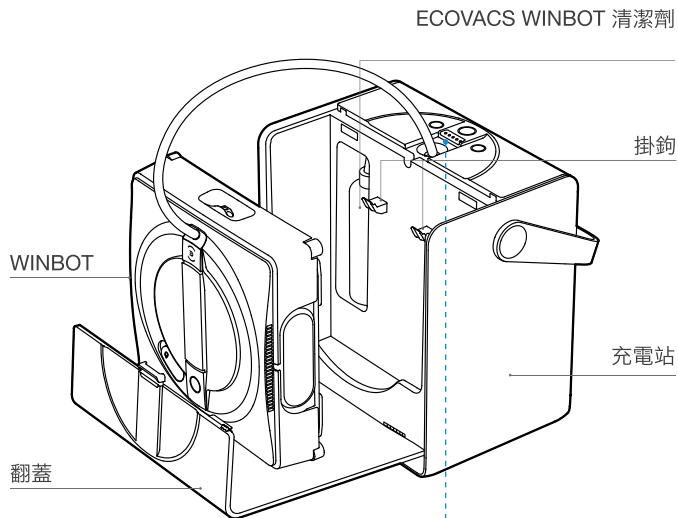
有關歐盟符合性聲明的資訊，請瀏覽 <https://www.ecovacs.com/global/compliance>



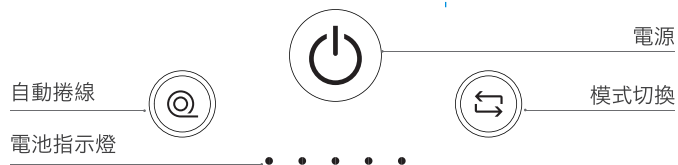
妥善棄置本產品

此標記表示本產品在歐盟內不得與其他家居廢物一併棄置。為避免因無節制地棄置廢料而損害環境或人類健康，請以負責任的態度回收，以促進對物料資源的可持續再利用。如要回收使用過的產品，請使用回收系統或聯絡您向其購買產品的零售商。他們能夠安全妥善地回收產品。

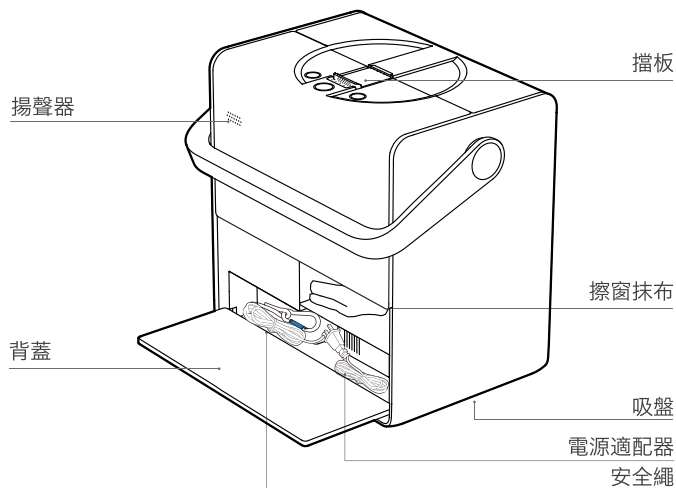
產品圖表



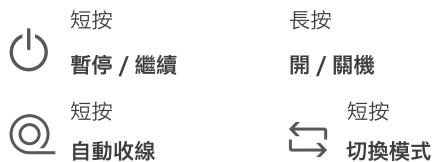
按鈕



注意：圖片與圖解僅供參考，可能與實際產品外觀有所不同。
產品設計和規格如有變更，恕不另行通知。



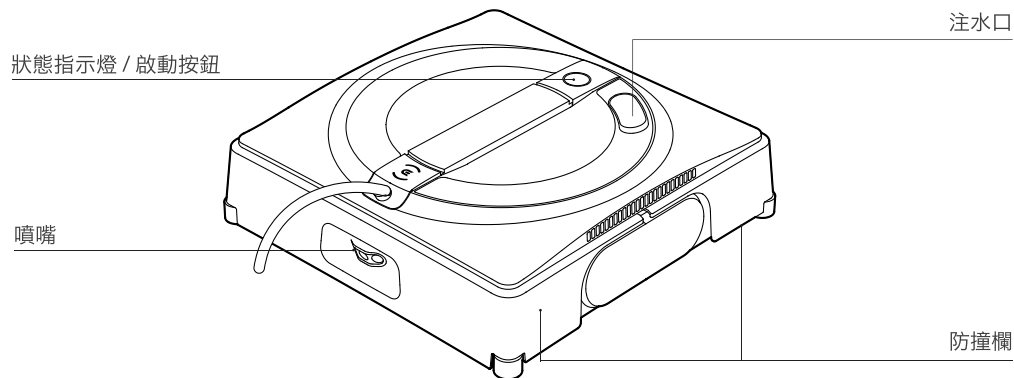
基站按鍵指引



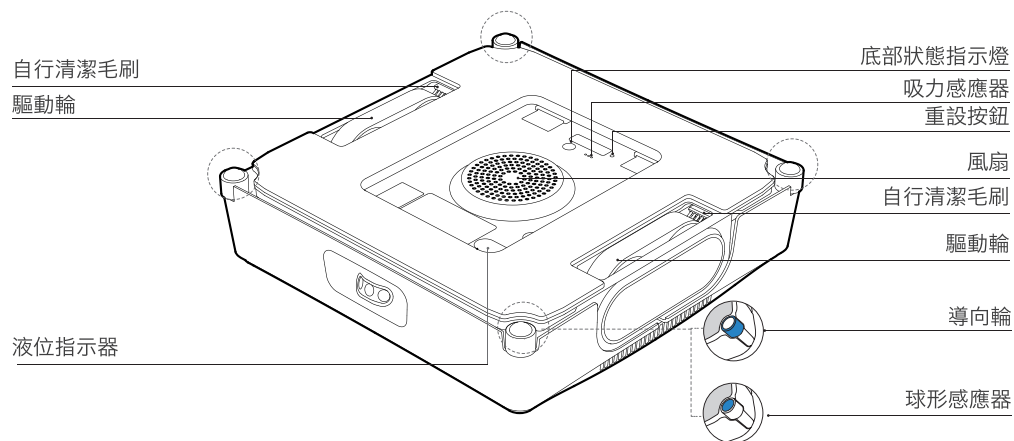
窗寶工作時返回原點：長按 @ 鍵
基站解除吸附：長按 ⏻ ≥ 2 秒，不松手同時短按 @ 。

產品圖表

WINBOT

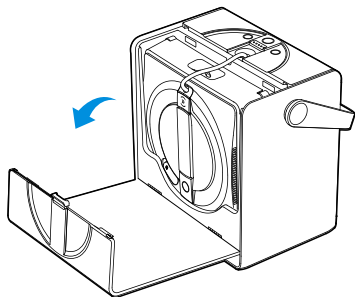


底視圖

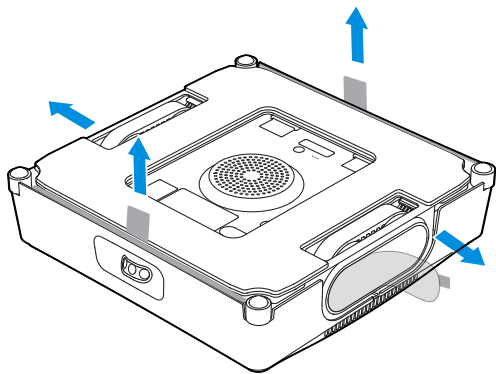


快速入門指南

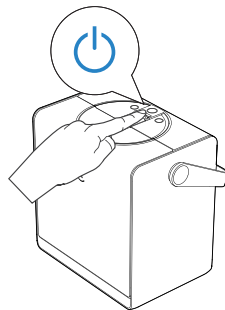
1. 如圖所示，打開翻蓋。



2. 取出 WINBOT 並移除所有保護物料。

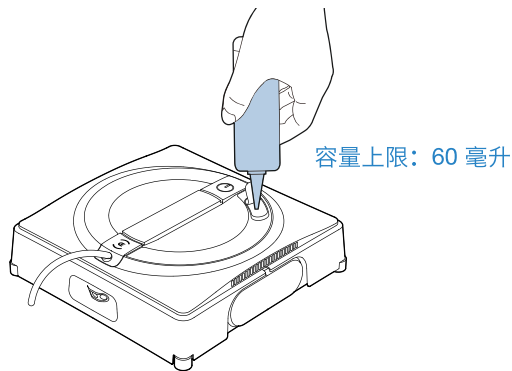


3. 長按電源按鈕兩秒，以啟動充電站及 WINBOT。



* 首次充電足夠讓 WINBOT 在預設模式下運行約 40 分鐘。

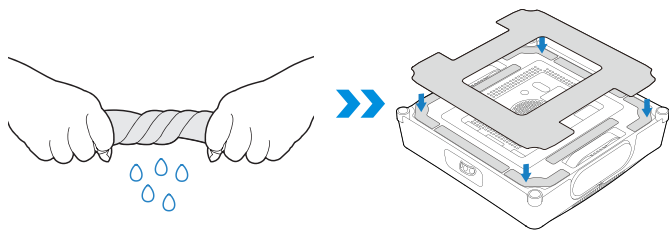
4. 將 ECOVACS WINBOT 清潔劑加入水箱。



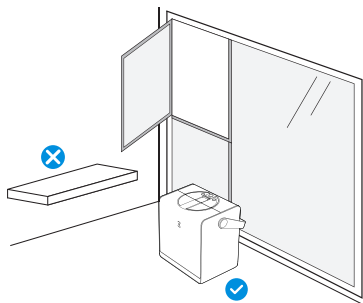
* 請勿注入過多清潔劑而導致水箱溢出。

* 請勿使用其他製造商的清潔劑。

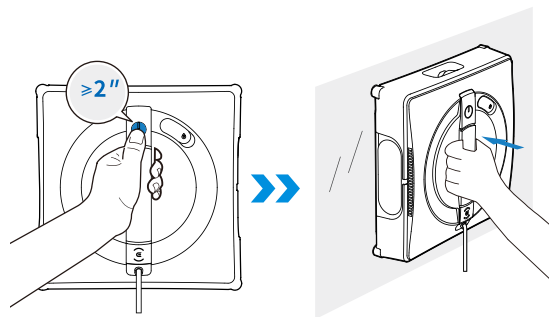
5. 弄濕並擰乾擦窗抹布，然後將其平放在 WINBOT 底部的魔術貼上。請注意要將窄邊和闊邊對齊。



6. 請確保將充電站放在平坦無縫的表面上。



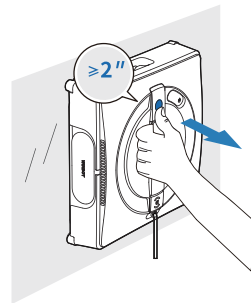
7. 長按啟動按鈕兩秒，以啟動風扇。將 WINBOT 底部（裝有擦窗抹布的一面）靠在窗戶上；WINBOT 會自動吸附並開始清潔。



* 進行清潔前，請仔細查看 WINBOT 吸附的範圍是否有任何微小顆粒。如果有，請清除顆粒或轉移至無顆粒的位置，以免刮花玻璃。

* 請及時清潔擦窗抹布，並確保完全清除上面的微小顆粒，以免刮花玻璃。

8. 完成清潔後，WINBOT 會自動返回原地，並等待被移走。在此時長按啟動按鈕兩秒，以停止風扇。然後，根據語音提示取下 WINBOT。



* 如果 WINBOT 正在處理的真空玻璃出現漏水，請於清潔完成後立即移走 WINBOT。

技術規格

型號	WG821-11		
額定輸入	24V === 4A	額定功率	126W
電源適配器	GM65-240275-2D 或 GM65-240275-3D		
輸入	100-240V~ 50-60Hz 2A	輸出	24V === 2.75A
充電站尺寸（毫米）		312*215*327	
WINBOT 尺寸（毫米）		271*271*77	

無線模組的輸出功率小於 100 mW。
備註： 因產品持續改善的需要，本公司保留對產品進行任何技術、設計變更的權利，解釋權歸本公司所有。



請掃描二維碼以了解更多資訊。

Ecovacs Home Service Robotics Co., Ltd.

中國江蘇省蘇州市吳中區郭巷吳淞江工業園淞葦路 518 號

451-2250-0406