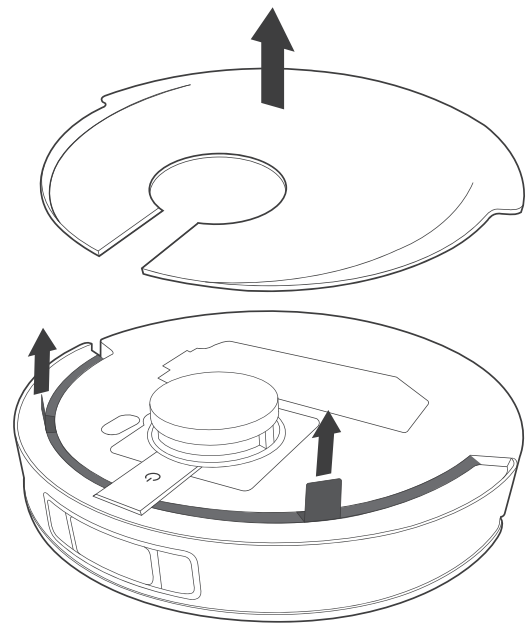


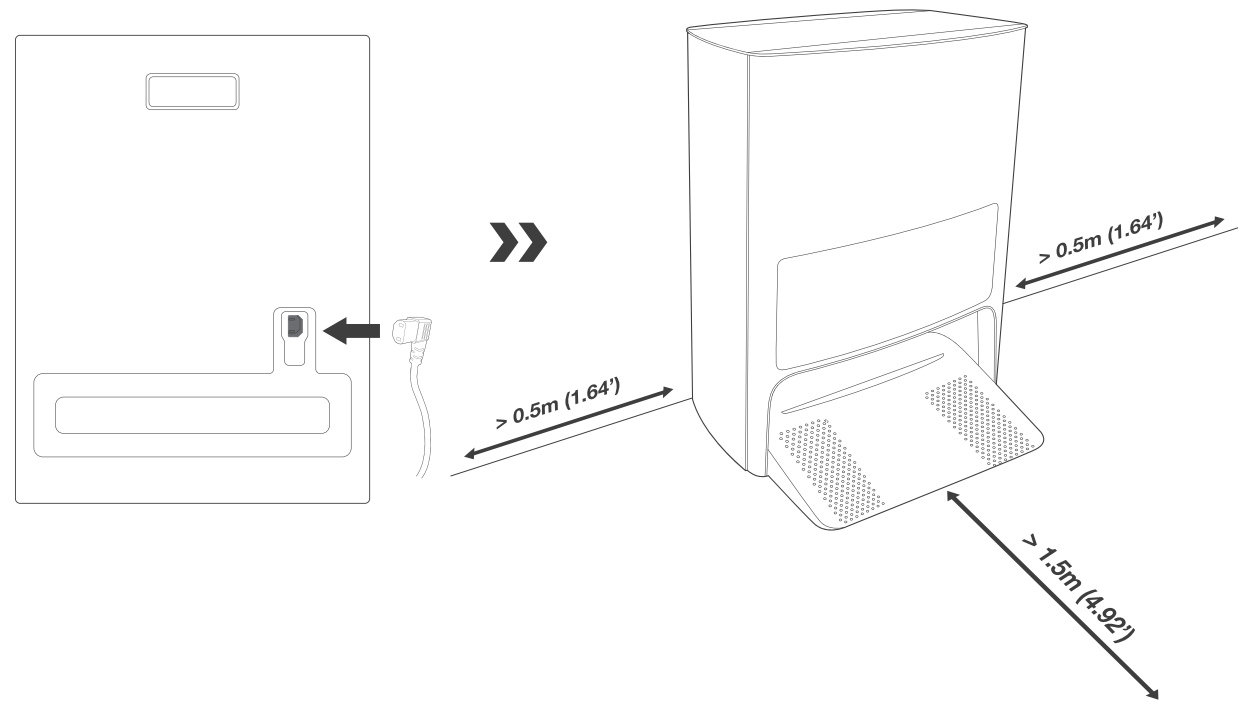
Thank you for choosing DEEBOT. Please follow these steps to get started.

感謝您選擇 DEEBOT。請遵循下列步驟開始操作。

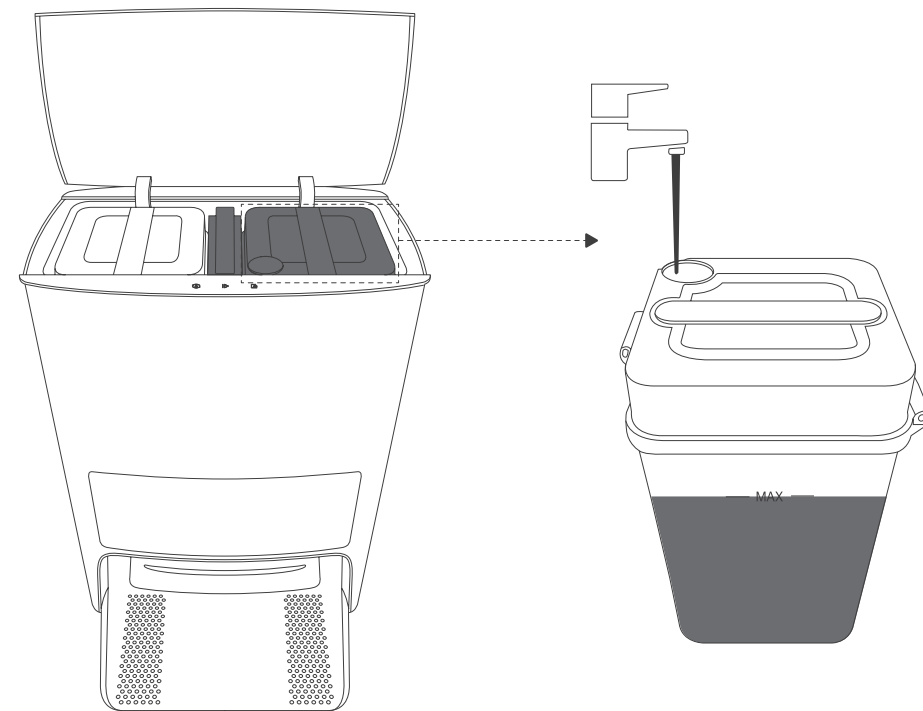
- 1** Remove protectors.
移除保護物。



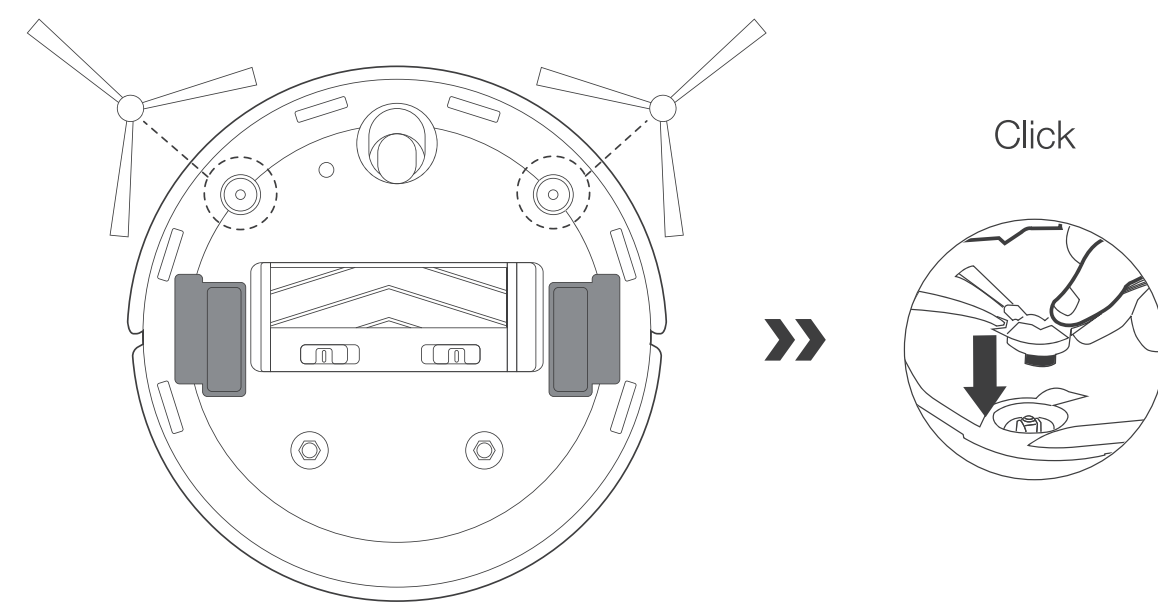
- 2** Assemble the OMNI Station.
組裝全能基座。



- 3** Add water to Clean Water Tank
在清水箱中加入水
Note: The water drops in the Water Tank is left over from the function test, please rest assured to use.
注意: 水箱中的水漬是功能測試後遺留的，請放心使用。



- 4** Install Side Brushes.
安裝邊刷。

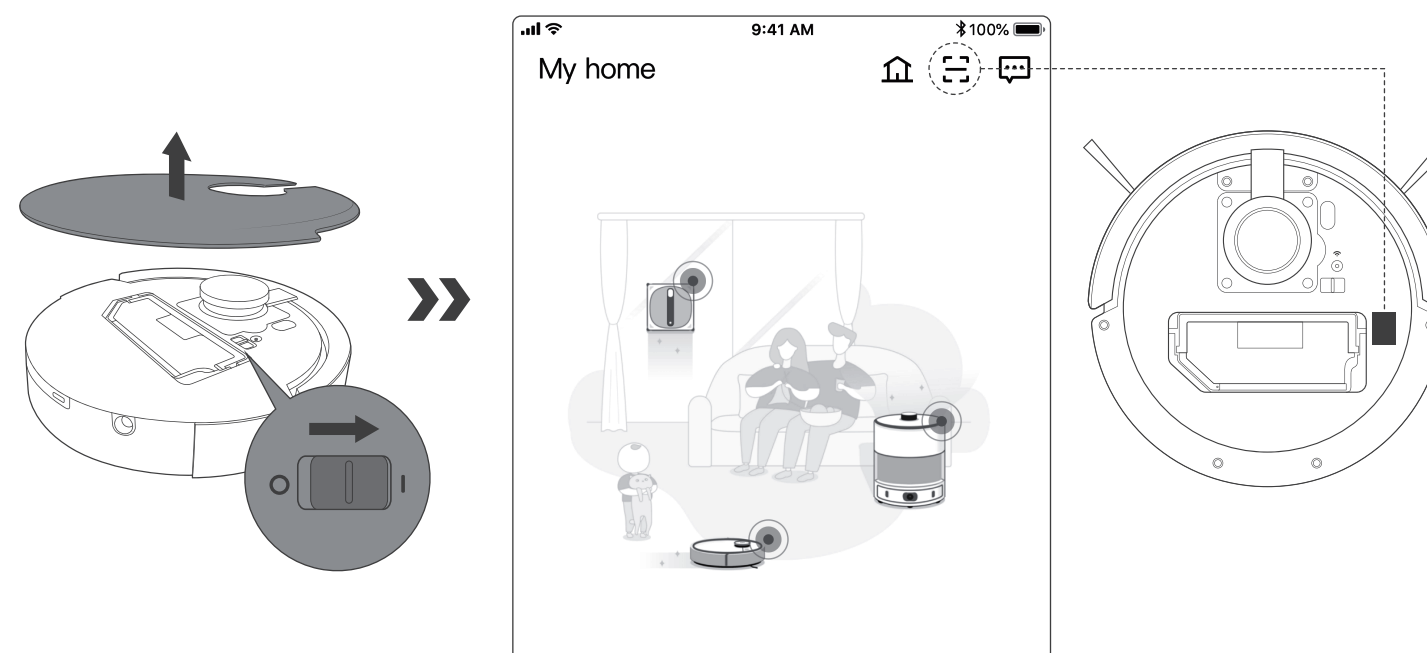


- 5** Scan the QR code to download ECOVACS HOME App.
掃描QR碼即可下載ECOVACS HOME App。



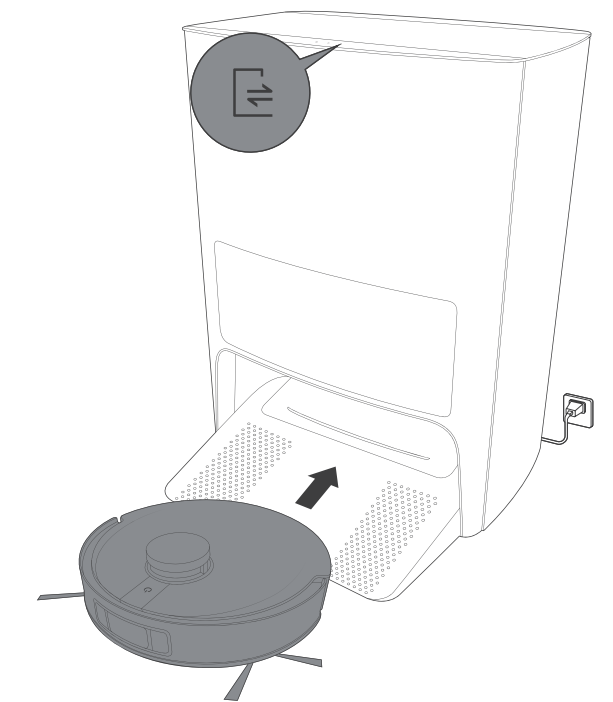
- 6** Power ON. Open the App.
Scan the QR code under the cover to add your robot via the App.
開機。開啟App。
使用App內建掃描器掃描蓋板下的QR碼以新增主機。

Note: Please use a 2.4GHz or 2.4/5 GHz mixed network.
注意: 請使用 2.4GHz 或 2.4/5 GHz 的混合網路。



- 7** Make sure that the OMNI Station is connected to the power. Tap , DEEBOT will return to the Station automatically and start charging.
確保全能基座連接到電源。點選, DEEBOT 將自動返回清潔基座並開始充電。

Note: Do not install the Mopping Pad Plates for the first time cleaning. Vacuum Mode is recommended for a quick mapping.
注意: 第一次打掃時，請勿安裝拖布支架。建議在掃地模式下進行快速建圖。



Need Help? 需要協助嗎？

**Save the trouble for return.
Contact us, we are here to help!**
省去退貨的麻煩。
與我們聯絡，我們非常樂意提供協助！

 Contact our Customer Success Team
聯絡我們的客戶成功團隊
www.ecovacs.com/global/support/contact-us

WELCOME to the ECOVACS family!
歡迎加入 ECOVACS 家族！

Follow Us
關注我們



Self-cleaning Button
自清潔按鈕



Start/Pause Button
開始/暫停按鈕



Recall/Exit Button
召回/退出按鈕